

PROFESSIONAL  
MANUFACTURER OF  
**LED FRAMELESS LIGHT**

---

The Geewee logo, featuring a stylized orange 'G' with three horizontal lines above it, followed by the word 'eewee' in a lowercase, rounded, orange sans-serif font.The Geewee logo, featuring a stylized orange 'G' with three horizontal lines above it, followed by the word 'eewee' in a lowercase, rounded, orange sans-serif font.

ZHEJIANG GEEWEE LIGHTING TECHNOLOGY CO.,LTD.

✉ Devie zhao@geeweelighting.com    🌐 [www.geeweelighting.com](http://www.geeweelighting.com)    ☎ 86-574-27878105



# ABOUT US

## ZHEJIANG GEEWEE LIGHTING TECHNOLOGY CO., LTD.

Zhejiang Geewee Lighting Technology CO.,LTD., is located in Ningbo,China.GeeWee Lighting is an innovative company which provide intelligent lighting solutions for whole house scenes,devote to design of full-range lighting products,research and development,manufacturing and sales, all along with intelligent lighting and health lighting exploration.The brand will adhere to the core product concept of minimalist life intelligent interaction for along time,adhering to brand attitude of "Lead rays of lighting to endless forever",to achieve the brand vision of "let every user enjoy the minimalist vision brought by smart technology" unremitting pursuit.



1

Belief

+

0

Method

+



Wisdom/Light

### BRAND CONCEPT:GOAL=BELIEF+METHOD

We create a product,create a enterprise ,even create a brand,all are the lofty goals of whole employees for our company.For the goal,only under the unswerving faith of whole employees,though our continuous innovation,hard work,win the trust of customers and other methods can be achieved.Belief is 1,method is 0,both are indispensable.



LEAD RAYS OF LIGHT TO ENDLESS FOREVER



# TABLE OF CONTENTS

<b>KALON FRAMELESS LIGHT</b>	—————	01-02
<b>GNOME FRAMELESS LIGHT</b>	—————	03-04
<b>ELEVATE FRAMELESS LIGHT</b>	—————	05-06
<b>CANDY CEILING LIGHT</b>	—————	07-08
<b>DELTA CEILING LIGHT</b>	—————	09-10
<b>FLORA CEILING LIGHT</b>	—————	11-12
<b>GRACE CEILING LIGHT</b>	—————	13-14
<b>HARBOUR CEILING LIGHT</b>	—————	15-16
<b>IRIS CEILING LIGHT</b>	—————	17-18
<b>HOLLAR CABINET LIGHT</b>	—————	19-20
<b>MERAKI CABINET LIGHT</b>	—————	21-22
<b>GEMMA CABINET LIGHT</b>	—————	23-24
<b>LIZ CABINET LIGHT</b>	—————	25-26
<b>MARIA MOON LIGHT</b>	—————	27-28



# KALON FRAMELESS LIGHT

## FEATURES

- Minimalist style of design, combines product characteristics of panel lamp and ceiling lamp.
- Ultra-thin frameless design, achieve five-sided luminous super-large luminous surface.
- The diffuser is formed by blowing molding high-end acrylic optical materials.
- Built-in isolated brand driver, diffuser is removable, convent to quick installation.

## TECHNICAL DATA

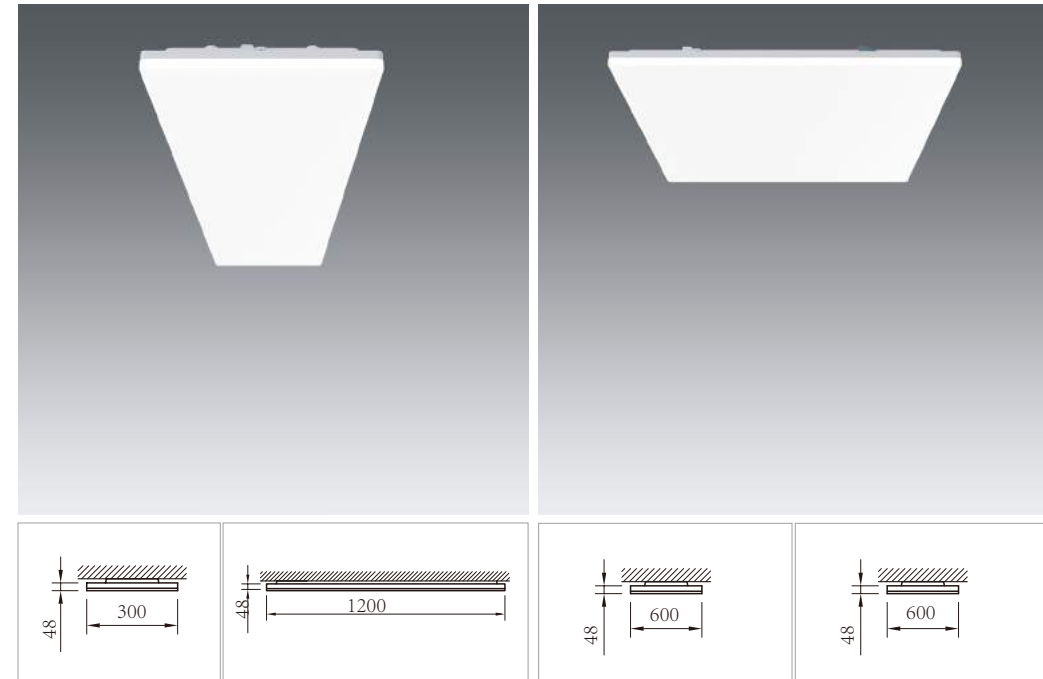
System power	40W
Luminous flux of luminaire	4000LM; 4800LM
Colour temperature	4000K
Colour Rendering index(CRI)	RA ≥80
Protection Class	II
Ingress protection	IP20

## SPECIFICATIONS

Luminaire for mounting on walls and ceiling, and for pendant mounting  
 Diameter diffuser: 600\*600\*48mm; 300\*1200\*48mm  
 Colour temperature can be adjustable

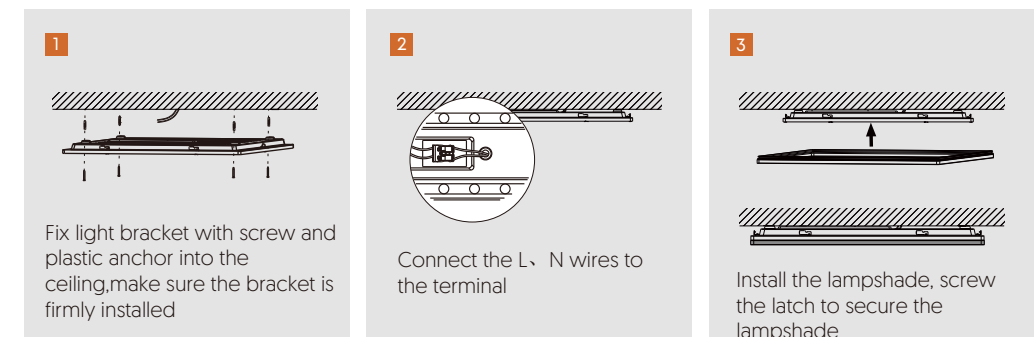
## APPLICATION AREAS

**Office&Education:** classroom, meeting room, offices, reception room, foyers and lobbies, corridors  
**Retail&Hospital:** Hotels, reception areas



Item NO.	Dimension (MM)	Voltage (V)	Power (W)	Luminous flux of luminaire(LM)	CCT (K)	CRI	DF	Warranty [Years]	Cover	IP	Certificate
GW_CL30120_AI-G1	300*1200*48	220-240	40	4000	4000	>80	>0.9	5	White/Starry Sky	20	CE/ROHS/ERP
GW_CL6060_AI-G1	600*600*48	220-240	40	4000	4000	>80	>0.9	5	White/Starry Sky	20	CE/ROHS/ERP
GW_CL30120_AI-G2	300*1200*48	220-240	40	4800	4000	>80	>0.9	5	White/Starry Sky	20	CE/ROHS/ERP
GW_CL6060_AI-G2	600*600*48	220-240	40	4800	4000	>80	>0.9	5	White/Starry Sky	20	CE/ROHS/ERP

## MOUNTING PROCEDURE





# GNOME FRAMELESS LIGHT

## FEATURES

- Minimalist style of design.
- Ultra-thin frameless design, achieve five-sided luminous super-large luminous surface.
- The chassis is made of iron, the frame is made of aluminum profile, the diffuser is made of PMMA/PS.
- 48 MM ultra-thin lamp body design, it can realize quick connection and quick installation.

## TECHNICAL DATA

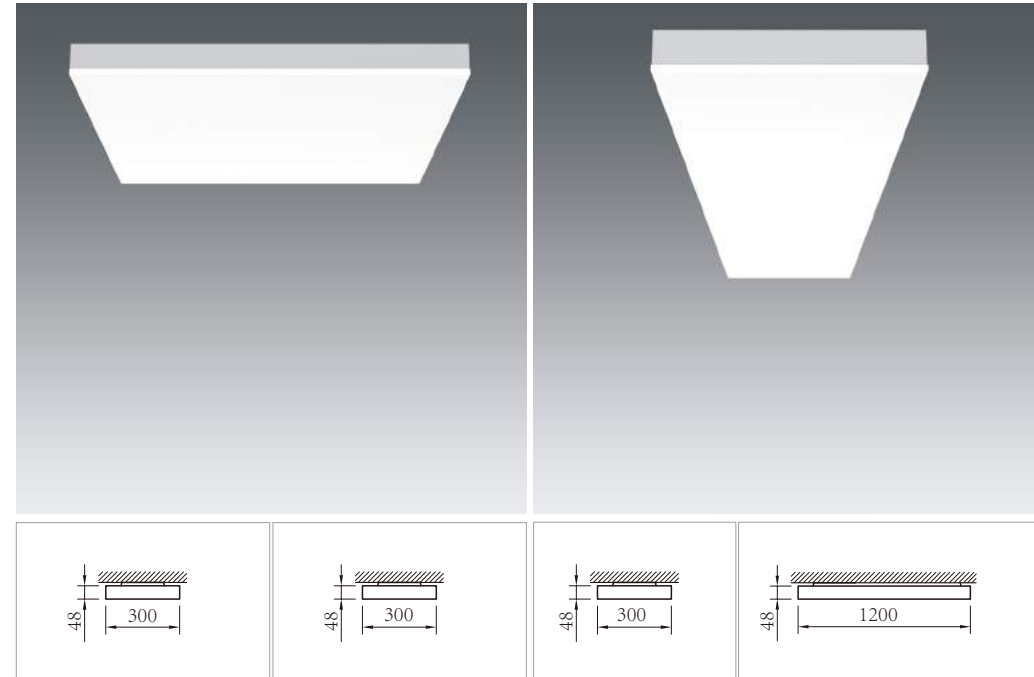
System power	18W,24W,40W
Luminous flux of luminaire	1800LM; 2400LM; 4000LM
Colour temperature	4000K
Colour Rendering index(CRI)	RA ≥ 80
Protection Class	II
Ingress protection	IP40

## SPECIFICATIONS

Luminaire for mounting on walls and ceiling, and for pendant mounting  
 Diameter diffuser: 300\*300\*48mm, 300\*600\*48mm, 600\*600\*48mm, 300\*1200\*48mm  
 Colour temperature can be adjustable

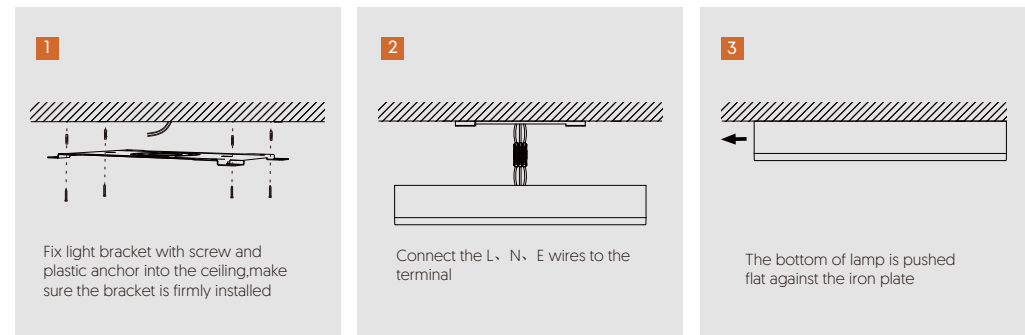
## APPLICATION AREAS

**Office&Education:** classroom, meeting room, offices, reception room, foyers and lobbies, corridors  
**Retail&Hospital:** Hotels, reception areas



Item NO.	Dimension (MM)	Voltage (V)	Power (W)	Luminous flux of luminaire(LM)	CCT (K)	CRI	DF	Warranty (Years)	IP	Certificate	Frame Cover	White/Starry Sky
GW-CLB1-001-G1	300*300*48	220-240	18	1800	4000	>80	>0.7	5	40	CE/ROHS/ERP	Black/White	Dual Power/CCT3/Dali/Scr/2.4G
GW-CLB1-002-G1	300*600*48	220-240	24	2400	4000	>80	>0.7	5	40	CE/ROHS/ERP	Black/White	Dual Power/CCT3/Dali/Scr/2.4G
GW-CLB1-003-G1	600*600*48	220-240	40	4000	4000	>80	>0.9	5	40	CE/ROHS/ERP	Black/White	Dual Power/CCT3/Dali/Scr/2.4G
GW-CLB1-004-G1	300*1200*48	220-240	40	4000	4000	>80	>0.9	5	40	CE/ROHS/ERP	Black/White	Dual Power/CCT3/Dali/Scr/2.4G

## MOUNTING PROCEDURE







# ELEVATE FRAMELESS LIGHT

## FEATURES

- Minimalist style of design
- Ultra-thin frameless design, super-large luminous surface.
- The chassis is made of EVA film, the frame is made of aluminum profile, the diffuser is made of PMMA/PS.
- Quick installation.
- Size can be customized.

## SPECIFICATIONS

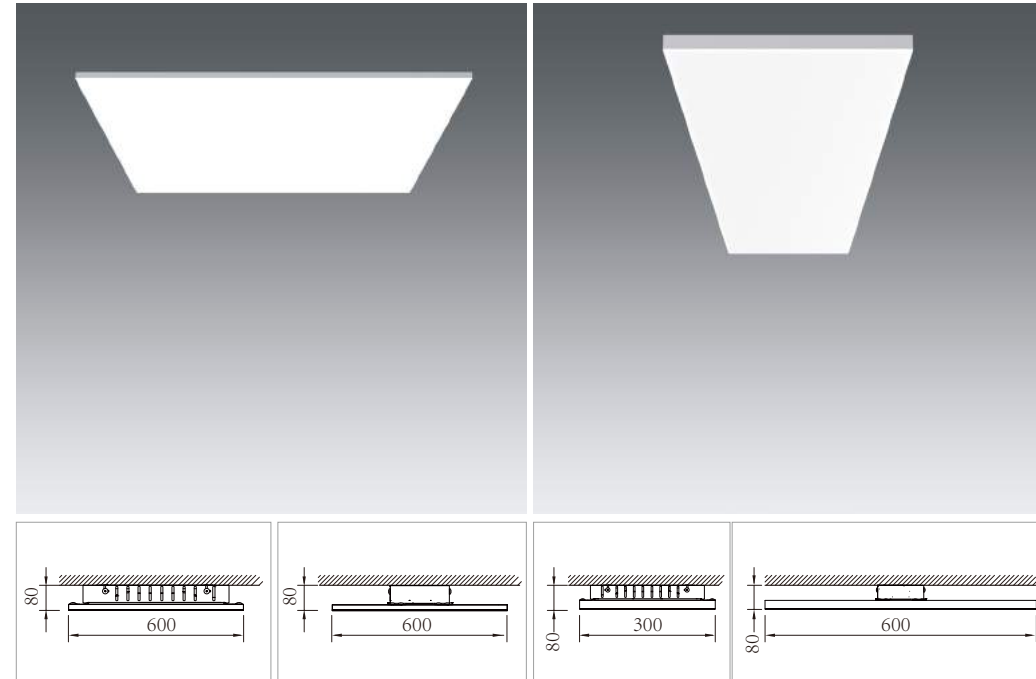
Luminaire for mounting on walls and ceiling, and for pendant mounting  
 Diameter diffuser: 300\*300\*80mm; 300\*600\*80mm; 600\*600\*80;  
 Colour temperature can be adjustable

## TECHNICAL DATA

System power	18W; 24W; 40W
Luminous flux of luminaire	1800LM; 2400LM; 4000LM
Colour temperature	3000/4000/5000K
Colour Rendering index(CRI)	CRI ≥ 80
Ingress protection	IP40

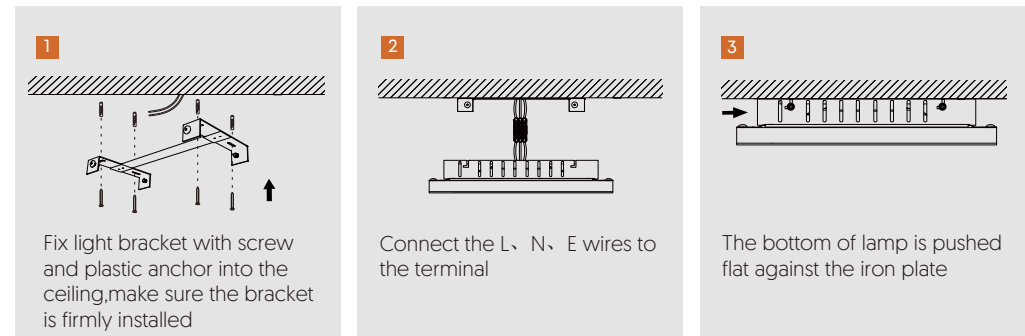
## APPLICATION AREAS

Office & Education  
 open-plan offices, individual offices, meeting rooms, foyers  
 and lobbies, cafeterias  
 Retail & Hospitality  
 reception areas, circulation zones, Checkout areas



Item NO.	Dimension (MM)	Voltage (V)	Power (W)	Luminous flux of luminaire(LM)	CCT3 (K)	CRI	DF	Warranty (Years)	IP	Certificate	Feame Color	OPTIONS
GW-CLE1-018-G1-Y	300*300*80	220-240	18	1800	4000	>80	>0.7	5	40	CE/ROHS/ERP	White	Dual Power/CCT3
GW-CLE1-024-G1-Y	300*600*80	220-240	24	2400	4000	>80	>0.9	5	40	CE/ROHS/ERP	White	Dual Power/CCT3
GW-CLDY1-040-G1-Y	600*600*80	220-240	40	4000	4000	>80	>0.9	5	40	CE/ROHS/ERP	White	Dual Power/CCT3

## MOUNTING PROCEDURE





# CANDY CEILING LIGHT

## FEATURES

- Minimalist style of design, Ultra-thin frameless
- The chassis is made of iron, the frame is made of aluminum profile, the diffuser is made of PMMA/PS.
- Quick installation.
- Size can be customized.

## SPECIFICATIONS

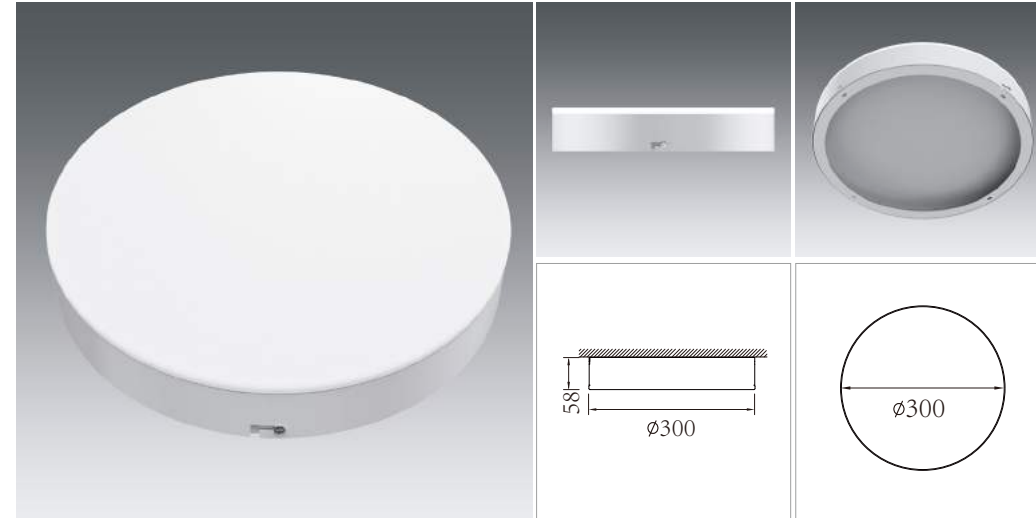
Luminaire for mounting on walls and ceiling, and for pendant mounting  
 Diameter diffuser: Ø300\*55mm; Ø400\*55mm; Ø500\*55; Ø600\*55mm;  
 Ø800\*55mm; Ø1000\*55mm  
 Colour temperature can be adjustable

## TECHNICAL DATA

System power	18W; 24W; 40W; 60W; 80W
Luminous flux of luminaire	1800LM; 2400LM; 4000LM; 6000LM; 8000LM
Colour temperature	3000/4000/5000K
Colour Rendering index(CRI)	CRI ≥ 80
Ingress protection	IP40

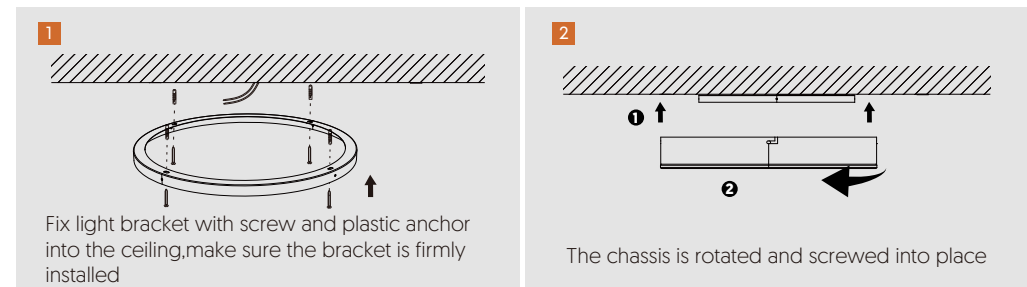
## APPLICATION AREAS

Office & Education  
 corridors, basements, staircases, wet rooms  
 Retail & Hospitality  
 storage rooms, corridors, lockers, garages



Item NO.	Dimension [MM]	Voltage [V]	Power [W]	Luminous flux of luminaire[LM]	CCT [K]	CRI	DF	Warranty [Years]	IP	Certificate	Feame Color	White/ Starry Sky
GW-CLCI-001-G1	Ø300*55	220-240	18	1800	3000/4000/5000	>80	>0.7	5	40	CE/ROHS/ERP	Black/White /Wood optics	Dual Power/CCT3/ Dali/Scr/2.4G/ TRIAC Dimmable
GW-CLCI-001-G1	Ø400*55	220-240	24	2400	3000/4000/5000	>80	>0.9	5	40	CE/ROHS/ERP	Black/White /Wood optics	Dual Power/CCT3/ Dali/Scr/2.4G/ TRIAC Dimmable
GW-CLCI-001-G1	Ø500*55	220-240	40	4000	3000/4000/5000	>80	>0.9	5	40	CE/ROHS/ERP	Black/White /Wood optics	Dual Power/CCT3/ Dali/Scr/2.4G/ TRIAC Dimmable
GW-CLCI-001-G1	Ø600*55	220-240	50	6000	3000/4000/5000	>80	>0.9	5	40	CE/ROHS/ERP	Black/White /Wood optics	Dual Power/CCT3/ Dali/Scr/2.4G/ TRIAC Dimmable
GW-CLCI-001-G1	Ø800*55	220-240	60	8000	3000/4000/5000	>80	>0.9	5	40	CE/ROHS/ERP	Black/White /Wood optics	Dual Power/CCT3/ Dali/Scr/2.4G/ TRIAC Dimmable
GW-CLCI-001-G1	Ø1000*55	220-240	80	10000	3000/4000/5000	>80	>0.9	5	40	CE/ROHS/ERP	Black/White /Wood optics	Dual Power/CCT3/ Dali/Scr/2.4G/ TRIAC Dimmable

## MOUNTING PROCEDURE





# DELTA CEILING LIGHT

FEATURES

- Ultra-slim design
- The lamp body is made of PC, the diffuser is made of PS.
- 38 MM ultra-thin lamp body design, it can realize quick connection and quick installation.
- External drive, easy to change.

SPECIFICATIONS

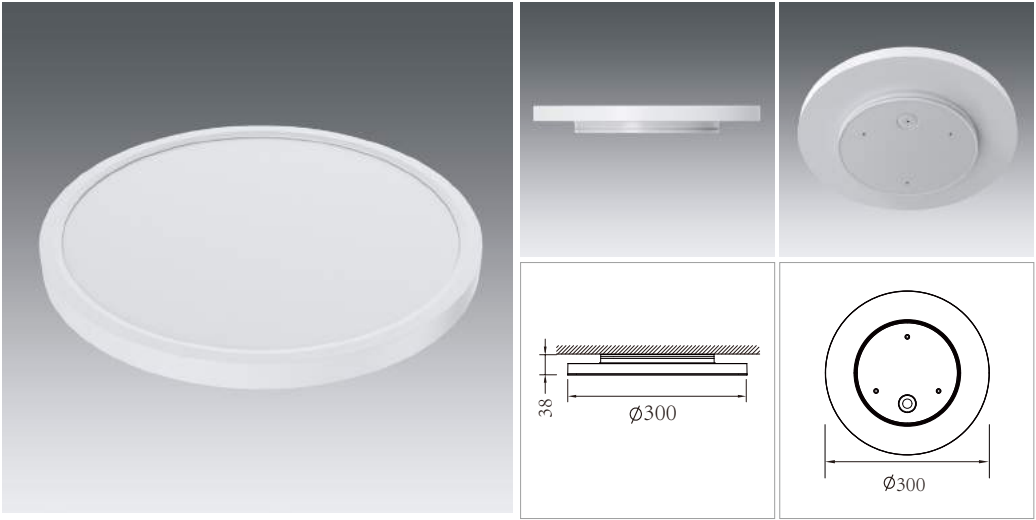
Luminaire for mounting on walls and ceiling, and for pendant mounting  
Diameter diffuser: Ø300\*38mm; Ø400\*38mm; Ø500\*38mm  
Colour temperature can be adjustable

TECHNICAL DATA

System power	18W; 24W; 40W
Luminous flux of luminaire	1440LM; 1920LM; 3200LM
Colour temperature	3000/4000/5000K
Colour Rendering index(CRI)	RA ≥ 80
Ingress protection	IP40

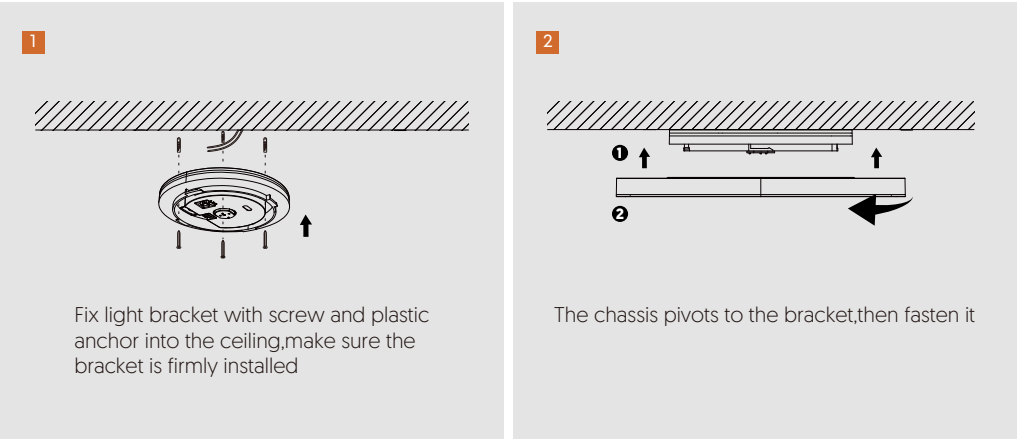
APPLICATION AREAS

Office & Education:  
Classrooms, meeting rooms, offices, reception rooms, cafeterias, entrance areas, corridors, stairwells  
Retail & Hospitality:  
Hotels, reception areas, corridors, circulation zones, sales rooms, shopping malls, restaurants, nursing homes, lobbies



Item NO.	Dimension (MM)	Voltage (V)	Power (W)	Luminous flux of luminaire(LM)	CCT3 (K)	CRI	DF	Warranty (Years)	IP	Certificate	Feature Color	OPTIONS
GW-CLDYI-018-G3-Y	Ø300*38	220-240	18	1440	4000	>80	>0.7	3	40	CE/ROHS/ERP	White	CCT1
GW-CLDYI-018-G3-Y	Ø300*38	220-240	18	1440	3000/4000/5000	>80	>0.7	3	40	CE/ROHS/ERP	White	Three-speed power adjustable/CCT 3
GW-CLDYI-024-G3-Y	Ø400*38	220-240	24	1920	4000	>80	>0.9	3	40	CE/ROHS/ERP	White	CCT1
GW-CLDYI-024-G3-Y	Ø400*38	220-240	24	1920	3000/4000/5000	>80	>0.9	3	40	CE/ROHS/ERP	White	Three-speed power adjustable/CCT 3
GW-CLDYI-040-G3-Y	Ø500*38	220-240	40	3200	4000	>80	>0.9	3	40	CE/ROHS/ERP	White	CCT1
GW-CLDYI-040-G3-Y	Ø500*38	220-240	40	3200	3000/4000/5000	>80	>0.9	3	40	CE/ROHS/ERP	White	Three-speed power adjustable/CCT 3

## MOUNTING PROCEDURE







# FLORA CEILING LIGHT

## FEATURES

- Full hood design
- Ultra-thin frameless design, achieve super-large luminous surface, edge right angle design, Ultra-small R angle design.
- The chassis is made of Iron, the diffuser is made of PMMA.
- Realize quick connection and quick installation.

## SPECIFICATIONS

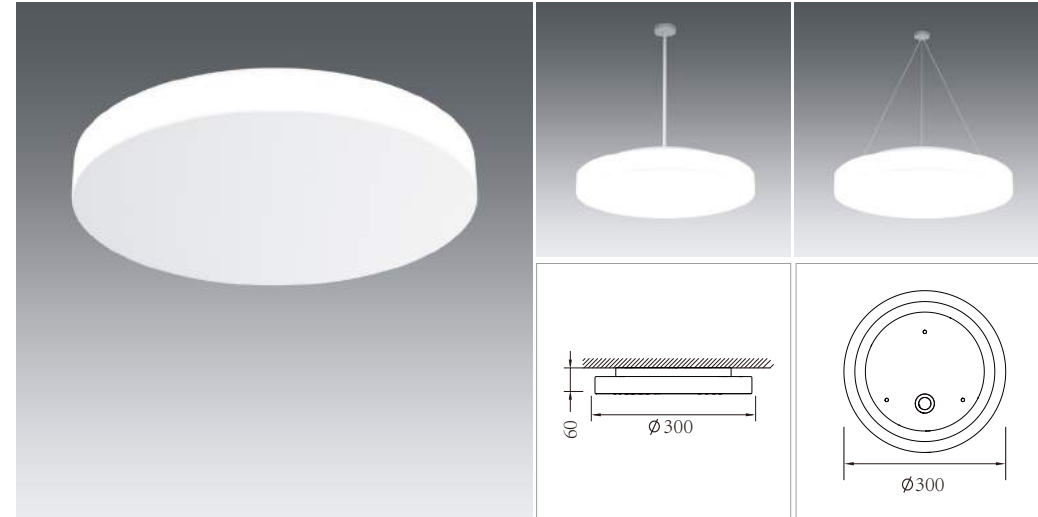
Luminaire for mounting on walls and ceiling, and for pendant mounting  
Diameter diffuser: Ø300\*60mm; Ø400\*60mm; Ø500\*60mm  
Colour temperature can be adjustable

## TECHNICAL DATA

System power	18W; 24W; 40W
Luminous flux of luminaire	1440LM; 1920LM; 3200LM
Colour temperature	3000/4000/5000K
Colour Rendering index(CRI)	RA ≥ 80
Ingress protection	IP40

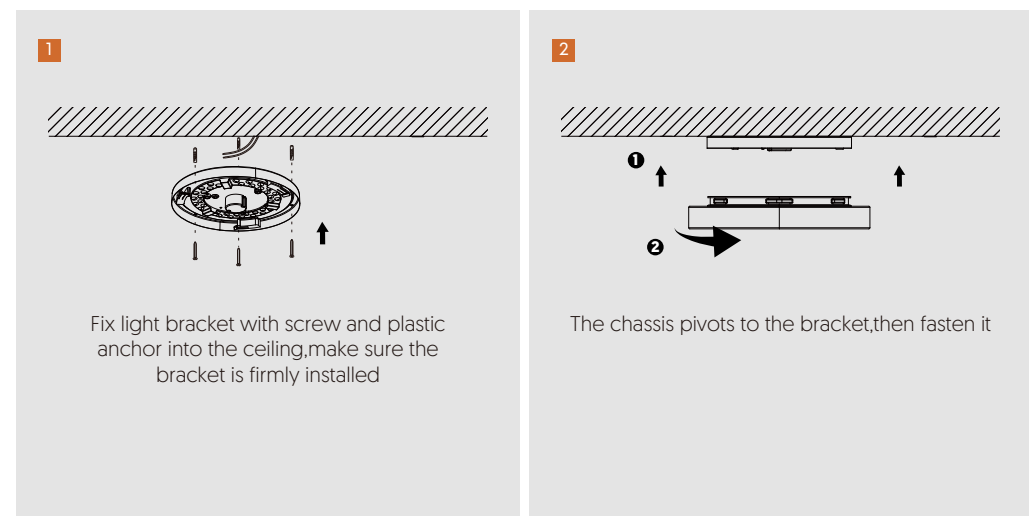
## APPLICATION AREAS

Office & Education  
classrooms, meeting rooms, offices, cafeterias, foyers and  
lobbies, corridors, staircases  
Retail & Hospitality  
hotels, reception areas, circulation zones



Item NO.	Dimension (MM)	Voltage (V)	Power (W)	Luminous flux of luminaire(LM)	CCT3 (K)	CRI	DF	Warranty (Years)	IP	Certificate	Feame Color	OPTIONS
GW-CLFY1-018-G3-Y	Ø300*60	220-240	18	1440	3000/4000/5000	>80	>0.7	3	40	CE/ROHS/ERP	White	Three-speed power adjustable/CCT 3
GW-CLFY1-024-G3-Y	Ø400*60	220-240	24	1920	3000/4000/5000	>80	>0.9	3	40	CE/ROHS/ERP	White	Three-speed power adjustable/CCT 3
GW-CLFY1-040-G3-Y	Ø500*60	220-240	40	3200	3000/4000/5000	>80	>0.9	3	40	CE/ROHS/ERP	White	Three-speed power adjustable/CCT 3

## MOUNTING PROCEDURE





# GRACE CEILING LIGHT

## FEATURES

- Front/back side are both IP44
- Simplistic modern design and look with comfortable lighting
- The chassis is made of PP with heightened hanging plate
- Easy to install
- Economical light

## SPECIFICATIONS

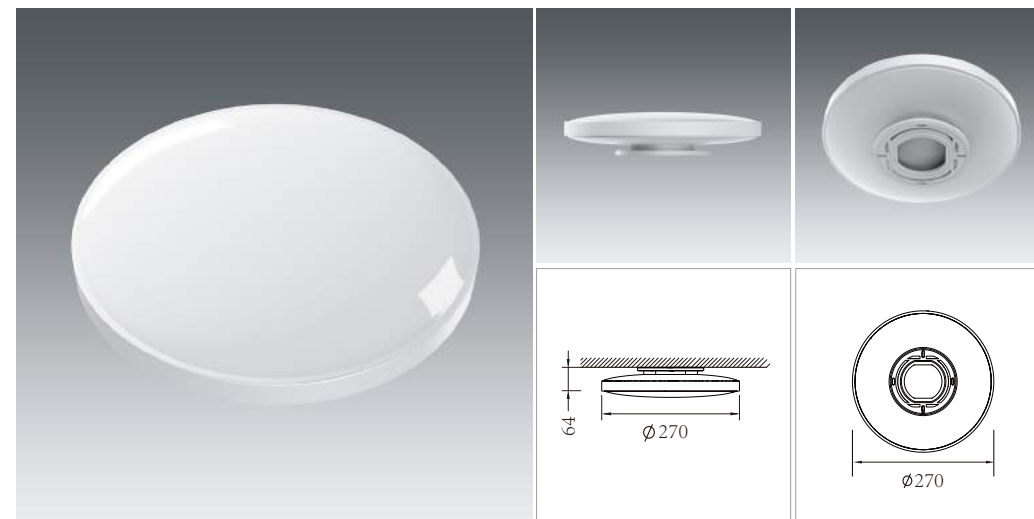
Luminaire for mounting on walls and ceiling, and for pendant mounting  
 Diameter diffuser: Ø230\*64mm; Ø270\*64mm; Ø370\*68mm; Ø470\*82mm  
 Colour temperature can be adjustable

## TECHNICAL DATA

System power	18W; 24W; 32W; 40W
Luminous flux of luminaire	1800LM; 2400LM; 3200LM; 4000LM
Colour temperature	4000K
Colour Rendering index(CRI)	RA ≥ 80
Ingress protection	IP44

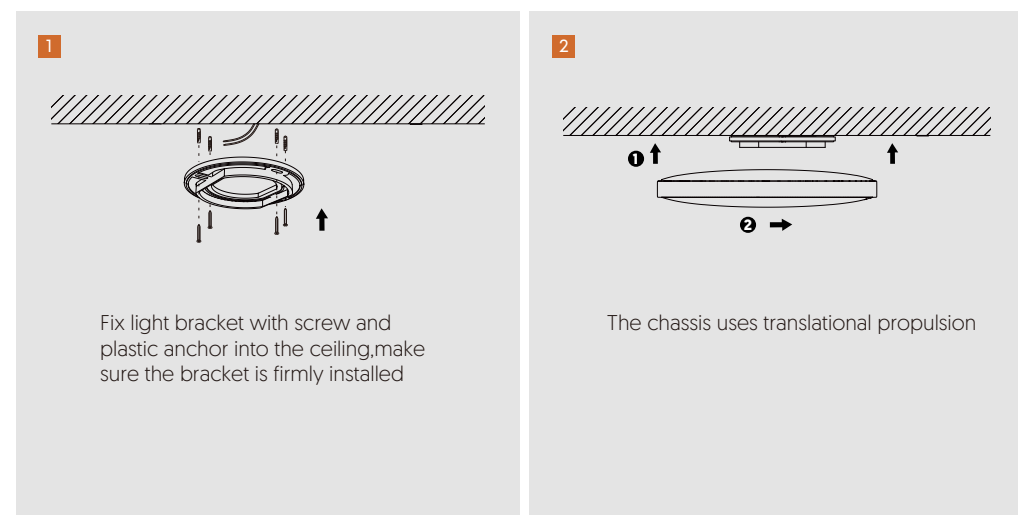
## APPLICATION AREAS

Office & Education  
 corridors, basements, staircases  
 Retail & Hospitality  
 storage rooms, corridors, exhibition spaces



Item NO.	Dimension [MM]	Voltage [V]	Power [W]	Luminous flux of luminaire(LM)	CCT [K]	CRI	DF	Warranty (Years)	IP	Certificate	Feame Color
GW-CLGYI-018-GI-Y	Ø 230*64	220-240	18	1440	4000	>80	>0.7	2	44	CE/ROHS/ERP	White
GW-CLGYI-024-GI-Y	Ø 270*64	220-240	24	1920	4000	>80	>0.7	2	44	CE/ROHS/ERP	White
GW-CLGYI-032-GI-Y	Ø 370*68	220-240	32	2560	4000	>80	>0.9	2	44	CE/ROHS/ERP	White
GW-CLGYI-040-GI-Y	Ø 470*82	220-240	40	3200	4000	>80	>0.9	2	44	CE/ROHS/ERP	White

## MOUNTING PROCEDURE





# HARBOUR CEILING LIGHT

## FEATURES

- Ultra-thin design, LED wall/ceiling luminaire
- Stand out in terms of shape ensure that the light is nice and evenly spread.
- Six sizes of lamp for your choose.
- Economical light

## SPECIFICATIONS

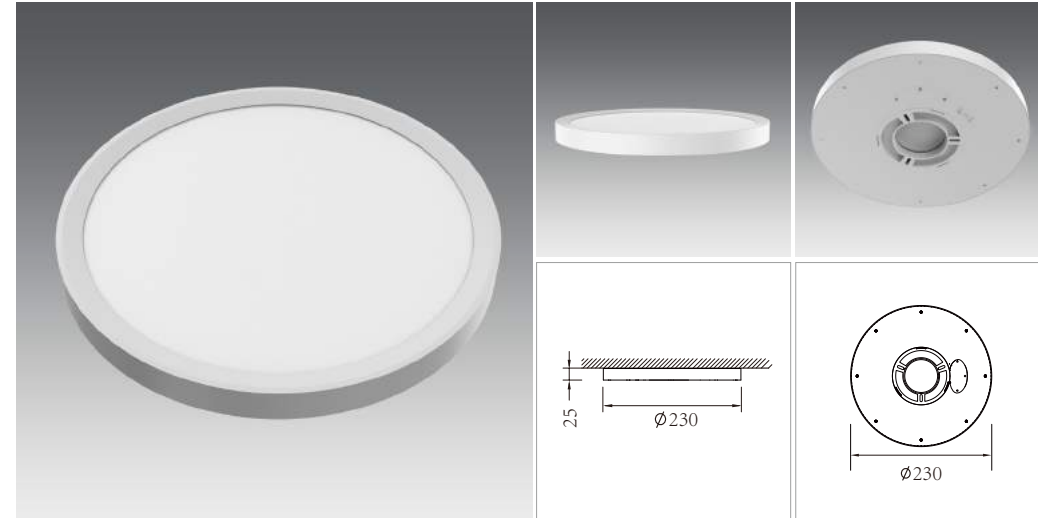
Luminaire for mounting on walls and ceiling, and for pendant mounting  
 Diameter diffuser: Ø230\*25mm; Ø300\*25mm; Ø400\*25mm;  
 Ø500\*25mm; Ø600\*25mm; Ø750\*25mm  
 Colour temperature can be adjustable

## TECHNICAL DATA

System power	18W; 24W; 32W; 40W; 50W; 80W
Luminous flux of luminaire	1800LM; 2400LM; 3200LM; 4000LM; 5000LM; 7000LM
Colour temperature	3000/4000/5000K
Colour Rendering index(CRI)	RA ≥ 80
Ingress protection	IP40

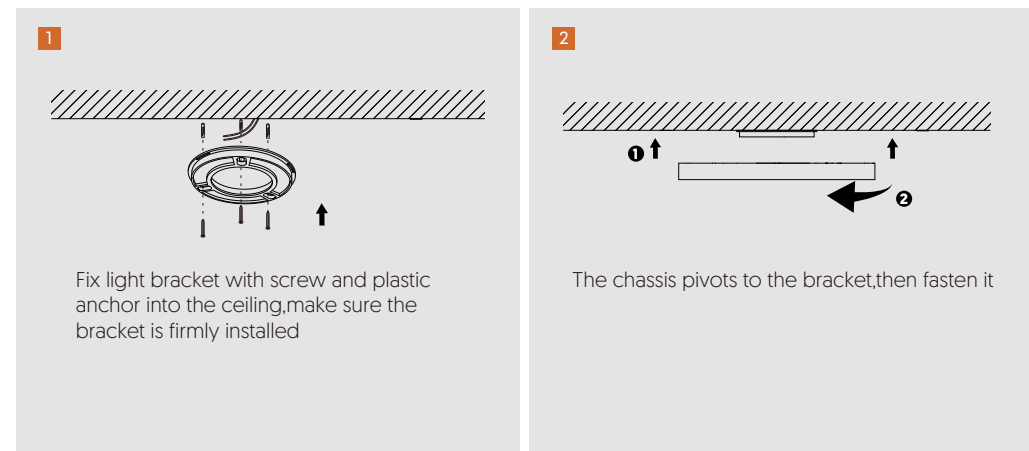
## APPLICATION AREAS

Office & Education  
 classrooms, meeting rooms, offices, reception rooms,  
 cafeterias, foyers and lobbies, corridors  
 Retail & Hospitality  
 hotels, reception areas, circulation zones



Item NO.	Dimension (MM)	Voltage (V)	Power (W)	Luminous flux of luminaire(LM)	CCT (K)	CRI	DF	Warranty (Years)	IP	Certificate	Frame Color	OPTIONS
GW-CLHYI-018-GI-Y	Ø230*25	220-240V	18	1440	3000/4000/5000	>80	>0.7	2	40	CE/ROHS/ERP	White	CCT3
GW-CLHYI-024-GI-Y	Ø300*25	220-240V	24	1920	3000/4000/5000	>80	>0.7	2	40	CE/ROHS/ERP	White	CCT3
GW-CLHYI-032-GI-Y	Ø400*25	220-240V	32	2560	3000/4000/5000	>80	>0.9	2	40	CE/ROHS/ERP	White	CCT3
GW-CLHYI-040-GI-Y	Ø500*25	220-240V	40	3200	3000/4000/5000	>80	>0.9	2	40	CE/ROHS/ERP	White	CCT3
GW-CLHYI-050-GI-Y	Ø600*25	220-240V	50	4000	3000/4000/5000	>80	>0.9	2	40	CE/ROHS/ERP	White	CCT3
GW-CLHYI-070-GI-Y	Ø750*25	220-240V	70	5600	3000/4000/5000	>80	>0.9	2	40	CE/ROHS/ERP	White	CCT3

## MOUNTING PROCEDURE







# IRIS CEILING LIGHT

## FEATURES

- Soft, comfortable lighting
- The chassis is made of Iron, the diffuser is made of PS, attractive
- High Light weight luminaire
- Economical light

## SPECIFICATIONS

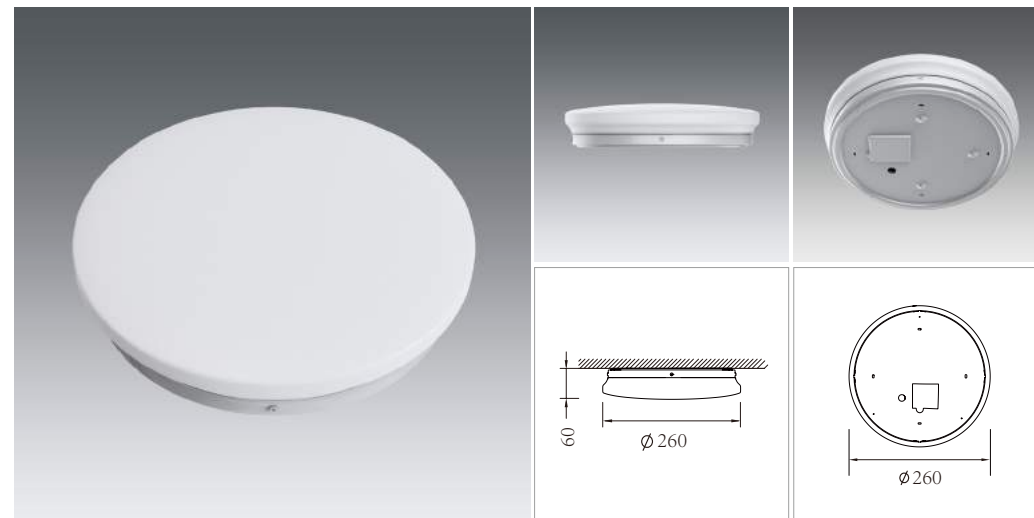
Luminaire for mounting on walls and ceiling, and for pendant mounting  
 Diameter diffuser: Ø260\*60mm; Ø330\*60mm; Ø380\*60mm  
 Colour temperature can be adjustable

## TECHNICAL DATA

System power	12W; 18W; 24W
Luminous flux of luminaire	1200LM; 1800LM; 2400LM
Colour temperature	4000K
Colour Rendering index(CRI)	RA ≥ 80
Ingress protection	IP20

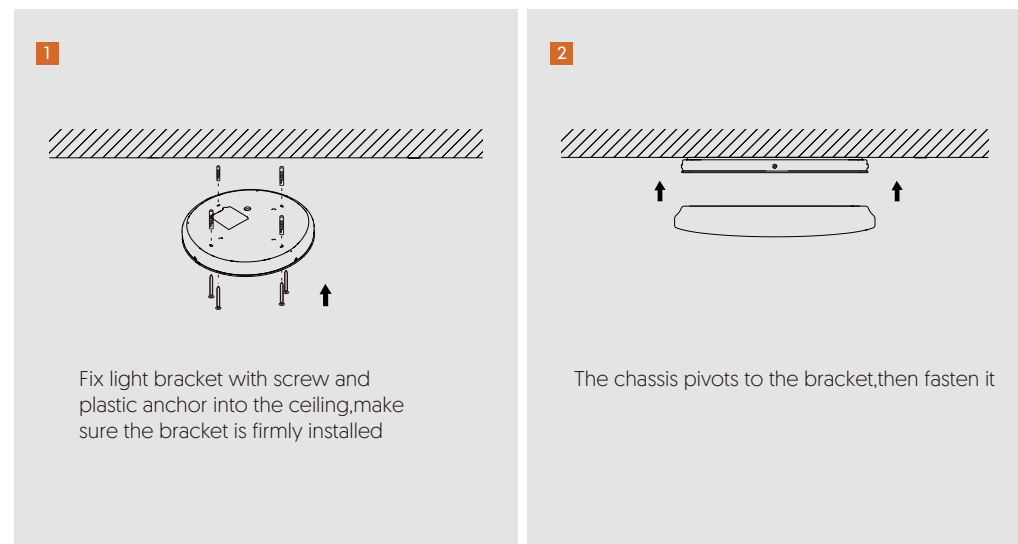
## APPLICATION AREAS

Office & Education  
 classrooms, meeting rooms, foyers and lobbies  
 Retail & Hospitality  
 hotels, reception areas, corridors, circulation zones, retail spaces, shopping malls



Item NO.	Dimension [MM]	Voltage [V]	Power [W]	Luminous flux of luminaire [LM]	CCT [K]	CRI	DF	Warranty [Years]	IP	Certificate	Frame Color
GW-CLYI-018-GI-Y	Ø260*60	220-240	12	960	4000	>80	>0.7	2	20	CE/ROHS/ERP	White
GW-CLYI-018-GI-Y	Ø330*60	220-240	18	1440	4000	>80	>0.7	2	20	CE/ROHS/ERP	White
GW-CLYI-018-GI-Y	Ø380*60	220-240	24	1920	4000	>80	>0.7	2	20	CE/ROHS/ERP	White

## MOUNTING PROCEDURE







# HOLLAR CABINET LIGHT

### FEATURES

- Ultra thin frameless design,meet the extreme demand for light
- High capacity battery,high light efficiency,standby 50 days even more[10 times a day]
- Hand sweep switch,easy to control even without touching the light
- Magnetic mounting,simple operation without electrician

### SPECIFICATIONS

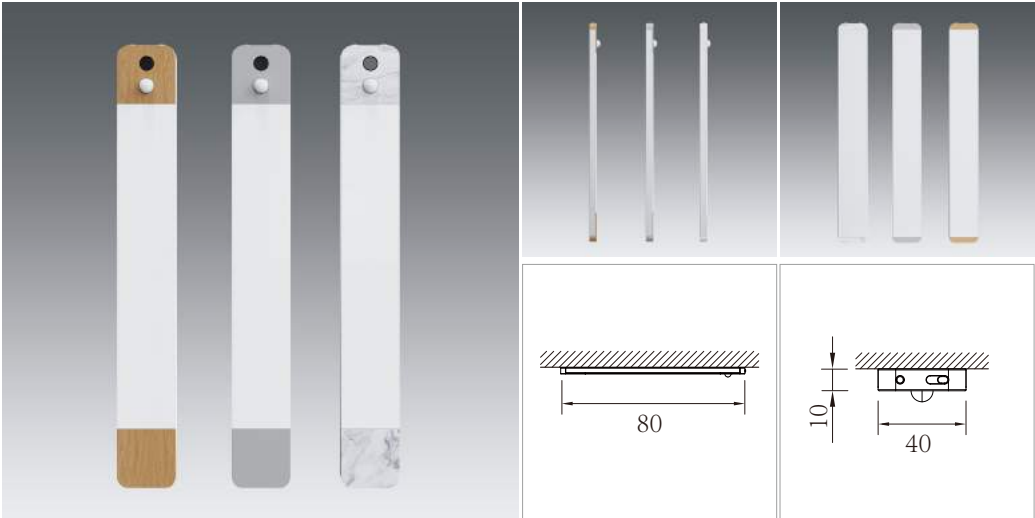
Luminaire for mounting on cabinet
Diameter diffuser:300*40*10mm ; 400*40*10mm
Colour temperature can be adjustable

### TECHNICAL DATA

System power	2.5W ; 4W
Luminous flux of luminaire	150LM ; 250LM
Colour temperature	3000-6500K
Colour Rendering index(CRI)	RA ≥ 80
Ingress protection	IP20

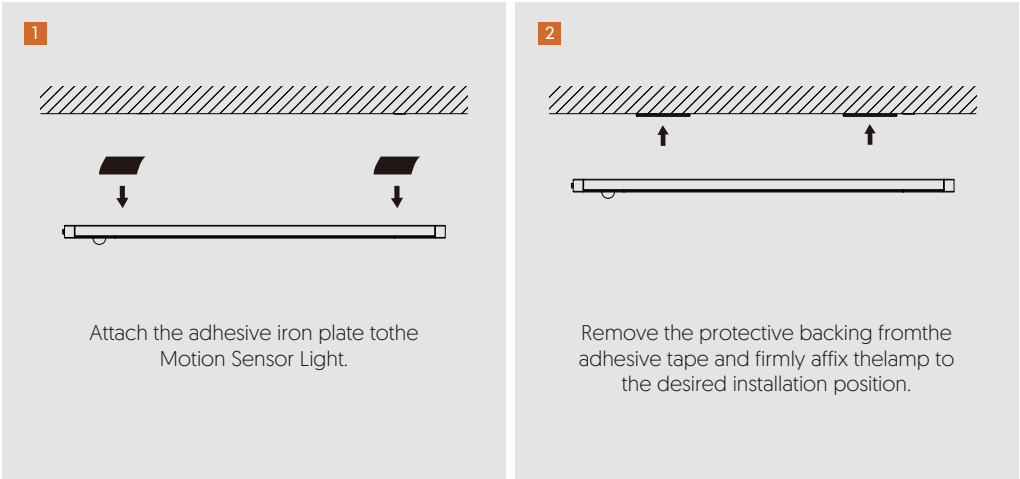
### APPLICATION AREAS

Suitable for wardrobe, drawers, living room, wash room, or used as a PIR sensor night light



Item NO.	Voltage[V]	Power[W]	Luminous Flux [LM]	Color temperature [K]	Voltage of Battery	Dimension [L*W*H]mm	Color	Certificate
GW-CBE1-300-G1	5V/1A	2.5	150	3000-6500	3.7V Lithium battery 2000mah	300*40*10	Wood+Silver/ Marble+Silver	CE/ROHS
GW-CBE1-400-G1	5V/1A	4	250	3000-6500	3.7V Lithium battery 3000mah	400*40*10	Wood+Silver/ Marble+Silver	CE/ROHS

## MOUNTING PROCEDURE





# MERAKI CABINET LIGHT

## FEATURES

- 1500/2200mAh Rechargeable Battery, our motion sensor light features a high-capacity 1500mAh lithium battery
- **2 Sensing Modes:** Choose between 3 sensing modes - all-day sensing and night sensing.
- **Ultra-Thin Design:** Our under cabinet light boasts an ultra-slim profile, measuring only 10 mm in thickness. Aluminium housing is good for heat dissipation.

## SPECIFICATIONS

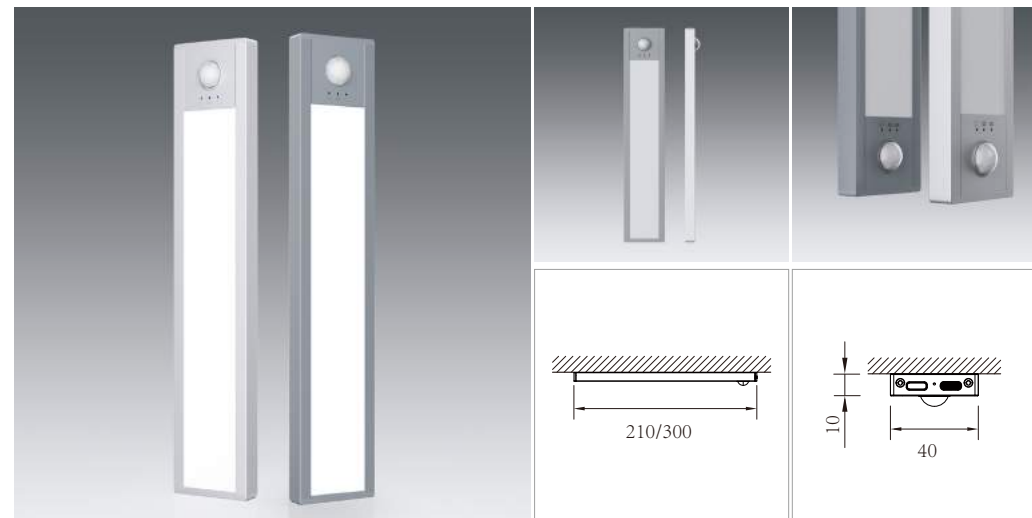
Luminaire for mounting on cabinet  
Diameter diffuser: 210\*40\*10mm; 300\*40\*10mm  
Colour temperature can be adjustable

## TECHNICAL DATA

System power	1.5W, 2.5W
Luminous flux of luminaire	100LM, 150LM
Colour temperature	3000K/4000K/5000K
Colour Rendering index(CRI)	RA ≥ 80
Ingress protection	IP20

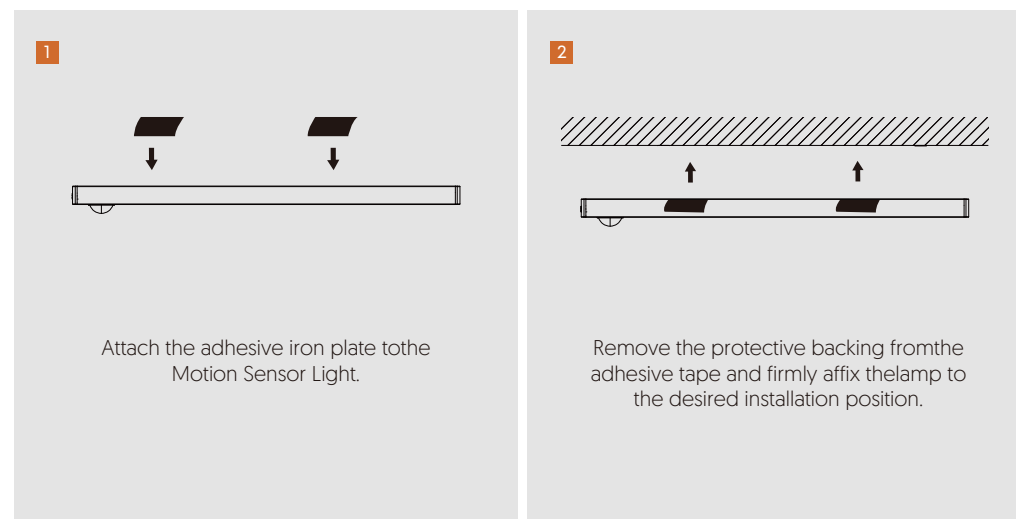
## APPLICATION AREAS

Suitable for wardrobe, drawers, living room, wash room, or used as a PIR sensor night light



Item NO.	Voltage(V)	Power(W)	Luminous Flux (LM)	Color temperature (K)	Voltage of Battery	Dimension (L*W*H)mm	Color	Certificate
GW-CBAI-210-G1	5V/1A	1.5	100	3000K/4000K/5000K	3.7V Lithium battery 1500mah	210*40*10	Silver/Sky gray	CE/ROHS
GW-CBAI-300-G1	5V/1A	2.5	150	3000K/4000K/5000K	3.7V Lithium battery 2200mah	300*40*10	Silver/Sky gray	CE/ROHS

## MOUNTING PROCEDURE





# GEMMA CABINET LIGHT

## FEATURES

- Unique knob design, improve the overall quality of the product
- High capacity battery, high light efficiency, standby 60 days even more (10 times a day)
- Hand sweep switch, easy to control even without touching the light
- Magnetic mounting, simple operation without electrician

## SPECIFICATIONS

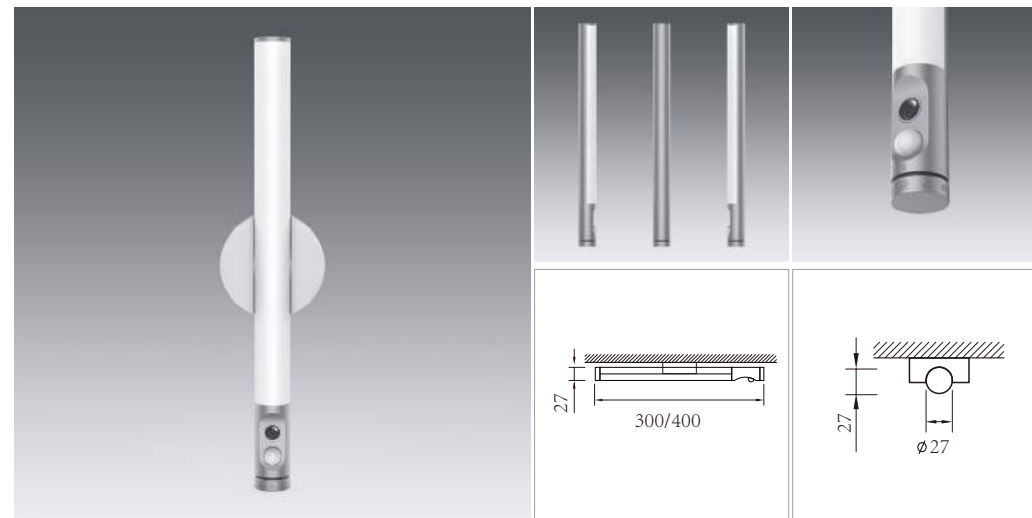
Luminaire for mounting on cabinet  
 Diameter diffuser:  $\varnothing 27 \times 300\text{mm}$ ;  $\varnothing 27 \times 400\text{mm}$   
 Colour temperature can be adjustable

## TECHNICAL DATA

System power	1.5W ; 2.5W
Luminous flux of luminaire	100LM ; 150LM
Colour temperature	3000-6500K
Colour Rendering index(CRI)	RA $\geq 80$
Ingress protection	IP20

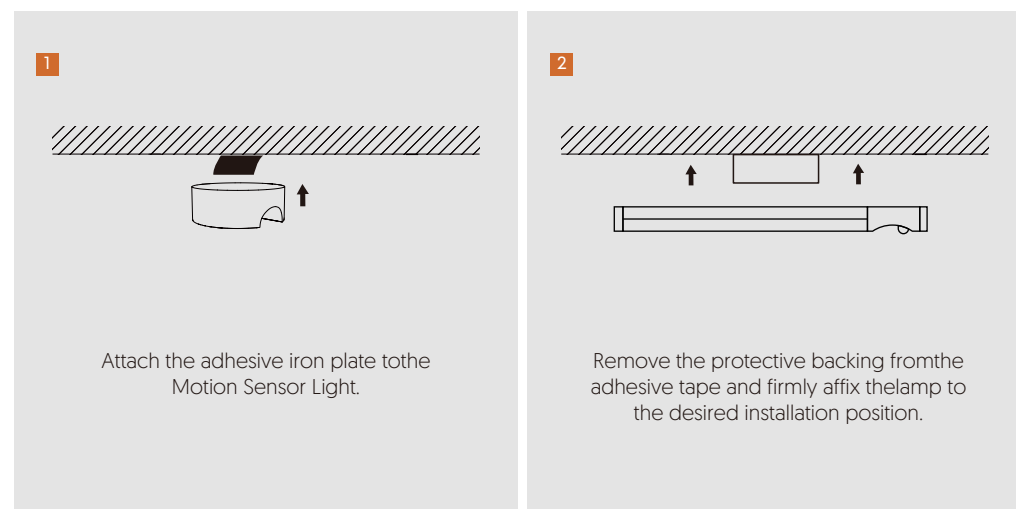
## APPLICATION AREAS

Suitable for wardrobe, drawers, living room, wash room, or used as a PIR sensor night light



Item NO.	Voltage(V)	Power(W)	Luminous Flux(LM)	Color temperature (K)	Voltage of Battery	Dimension (D*H)mm	Color	Certificate
GW-CBCI-300-GI	5V/1A	2.5W	150	3000/4000/5000	3.7V Lithium battery 2000mah	$\varnothing 27 \times 300$	Silver/Sky gray	CE/ROHS
GW-CBCI-400-GI	5V/1A	4W	250	3000/4000/5000	3.7V Lithium battery 4000mah	$\varnothing 27 \times 400$	Silver/Sky gray	CE/ROHS

## MOUNTING PROCEDURE





# LIZ CABINET LIGHT

- FEATURES**
- There are 30 degrees and 120 degrees of light can be adjusted,meet brightness requirement of different environment
  - Grouping Combine,easy to operate,it can be adapted to various scenarios
  - High capacity battery,standby time 90 days[Average of 10 times a day]

**SPECIFICATIONS**

Luminaire for mounting on cabinet

Diameter diffuser: 80\*80\*22mm

Colour temperature can be adjustable

TECHNICAL DATA	
System power	2.5W : 1W
Luminous flux of luminaire	150LM : 50LM
Colour temperature	3000/4000K/5000K
Colour Rendering index(CRI)	RA ≥ 80
Ingress protection	IP20

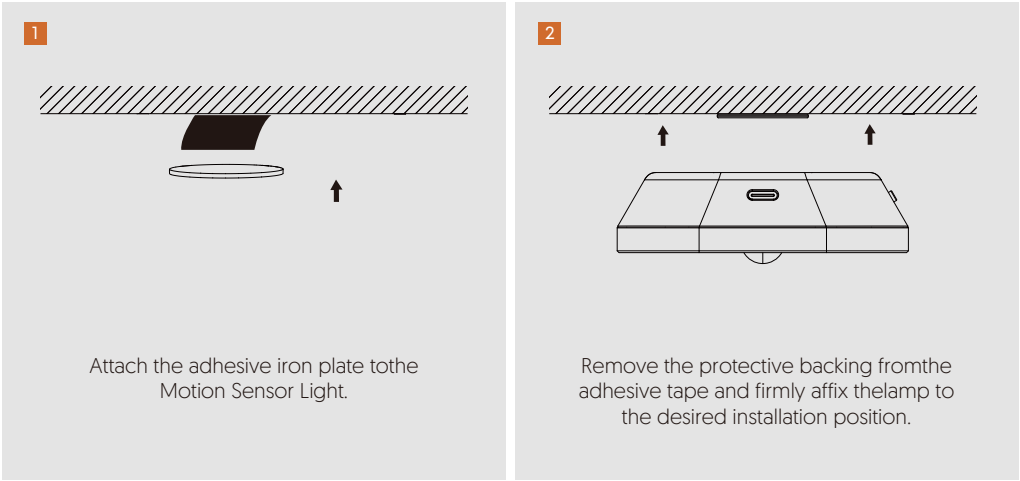
**APPLICATION AREAS**

Suitable for wardrobe, drawers, living room, wash room, or used as a PIR sensor night light



Item NO.	Voltage(V)	Power(W)	Luminous Flux (LM)	Color temperature (K)	Voltage of Battery	Dimension (L*W*H)mm	Color	Certificate
GW-CBD1-80-G1	5V/1A	2.5	150	3000/4000/5000	3.7V Lithium battery 2000mah	80*80*22	White/ Wood color	CE/ROHS
GW-CBD2-80-G1	5V/1A	1	50	3000/4000/5000	3.7V Lithium battery 2000mah	80*80*22	White/ Wood color	CE/ROHS

## MOUNTING PROCEDURE







# MARIA MOON LIGHT

## FEATURES

- The light is soft
- Grouping Combine,easy to operate,it can be adapted to various scenarios
- 1200MAH high capacity battery,standby time 90 days(Average of 10 times a day)

## SPECIFICATIONS

Luminaire for mounting on cabinet  
Diameter diffuser:  $\varnothing 105 \times 24$ mm  
Colour temperature can be adjustable

## TECHNICAL DATA

System power	0.5W
Luminous flux of luminaire	10LM
Colour temperature	2700K
Colour Rendering index(CRI)	RA $\geq$ 80
Ingress protection	IP20

## APPLICATION AREAS

Suitable for wardrobe, drawers, living room, wash room, or used as a PIR sensor night light



Item NO.	Voltage[V]	Power[W]	Luminous Flux [LM]	Color temperature [K]	Voltage of Battery	Dimension (D*H)mm	Certificate
GW-MOA1-105-G1	5V/1A	0.5W	10	2700	3.7V Lithium battery 1200mah	$\varnothing 105 \times 24$	CE/ROHS

## MOUNTING PROCEDURE

